



Milsoft FieldSyte™

Milsoft's FieldSyte™ brings the power of Milsoft's engineering and operations tools to your mobile device.

FieldSyte offers a suite of tools for efficient fieldwork, regardless of network coverage. Search and trace your electrical model, stake and design jobs, manage outage tickets, integrate with AVL and AMI, document meetings, and perform inspections.

FieldSyte offers over a dozen add-on modules to customize your solution, available for iOS, Windows, and Android.



FieldSyte Base Platform

Includes:

- Milsoft Model Data
- Open Street Map
- Background Features
- Tracing
- Navigation
- User Device Locations
- External GPS Integration
- Fault Locate
- Map Notes
- Satellite Maps
- Sketch
- Measure
- Configurable User Roles

ADDITIONAL ADD-ON FEATURES



Mapping

- Custom Published Maps
- Map Assessments
- Custom Live Maps
- Custom Raster Maps
- Weather



Forms

- Truck Inspections
- Up to 10 Custom Forms
- Unlimited Custom Forms



OMS

- Basic OMS
- OMS Assessments
- AMI
- AVL
- Live Model

All modules above require Milsoft OMS



Electric Projects / Staking

- Electric Projects / Staking with Accounting Integration
- Electric Projects / Staking without Accounting Integration
- Service Orders
- Easements



Tickets / Observations

- Pole
- Meters
- Storm Patrol
- Line Patrol
- Underground
- Substations and Major Equipment
- Sectionalizing Study Kit
- Distributed Generation Meters
- Vegetation Management
- Custom Tickets

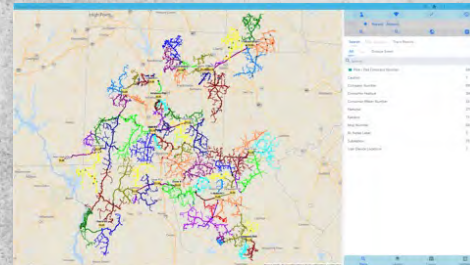
FieldSyte Base Platform

Includes:

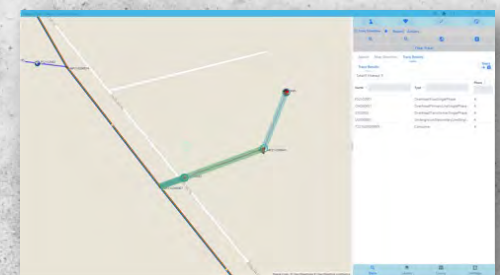
- ✓ Milsoft Model Data
- ✓ Open Street Map
- ✓ Background Features
- ✓ Tracing
- ✓ Navigation
- ✓ User Device Locations
- ✓ External GPS Integration
- ✓ Fault Locate
- ✓ Map Notes
- ✓ Satellite Maps
- ✓ Sketch
- ✓ Measure
- ✓ Configurable User Roles

Examples:

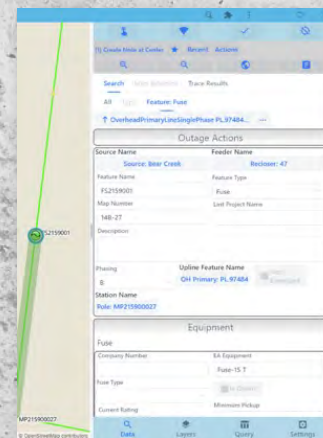
Zoomed to Model's Extents



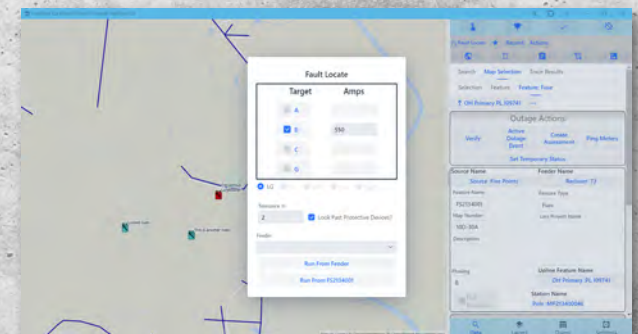
Trace Downline Results



Selected Fuse Device



Fault Locator



Add-ons to Base Platform

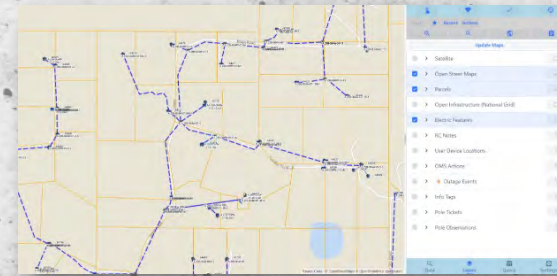


Mapping Options/Weather/ Custom Exports

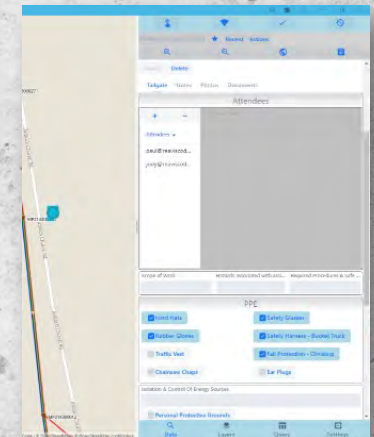
- Custom Published Maps:** one of the following published map/data sources: Spreadsheets, Mapbox Layers, Shape-files, CAD Imports, or ESRI Geodatabase.
- Map Assessments:** Cautions, Tailgates, Places, Incidents, Job-site Observations
- Custom Live Maps:** The ability to publish map layers from a different source (Spreadsheets, Mapbox Layers, Shapefiles, CAD Import, Esri Geodatabases).
- Custom Raster Maps:** Display of utility-provided background imagery
- Weather:** Aeris Streaming Weather Service

Examples:

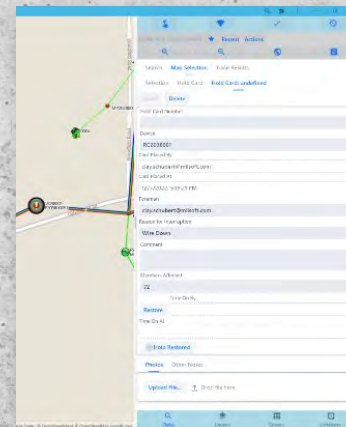
Parcel Example



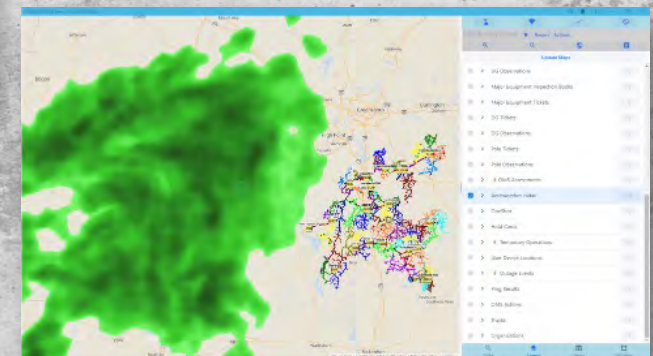
Map Assessment: Tailgate Form



Map Assessment: Hold Card on Device



Aeris Weather Radar



Add-ons to Base Platform



Forms

- Truck Inspections:** Providing safe and well maintained vehicle fleets increases performance and reduces costs. Adding custom inspections forms facilitates workflows in one centralized, easily accessible location.
- Up to 10 Custom Forms:** Forms give you the ability to have custom templates to collect and store data to replace existing forms and processes you use today. Forms are not map based and data is accessible on any FieldSyte device.
- Unlimited Custom Forms:** Same as above, but for users who have more than 10 custom forms they wish to implement in FieldSyte.

Examples:

Truck Inspection Form

The screenshot shows a mobile application interface for a 'Truck Inspection Form'. At the top, there are tabs for 'Search', 'Map Selection', and 'Trace Results'. Below these are search filters: 'Search All', 'Truck Inspection Form Books', and 'FormBook: Tr...'. A 'Delete' button is visible. The form fields include: 'Name' (Truck 245), 'Created By' (clay.schubert@milsoft.com), 'Created At' (9/15/2022, 3:49:29 PM), 'Modified By' (clay.schubert@milsoft.com), and 'Modified At' (12/8/2022, 8:52:41 PM). There is a checkbox for 'Requires Reinspection'. Below this is a 'Truck Type' dropdown menu set to 'Digger' and a 'Truck Number' field with '245'. An 'Upload File...' button and a 'Drop file here' area are also present. At the bottom, there are tabs for 'Routine Forms' and 'Issues', and a navigation bar with icons for 'Data', 'Layers', 'Query', and 'Settings'.

Add-ons to Base Platform



Outage Management System

All modules below require Milsoft OMS

- Basic OMS**
 - Two way outage tickets
 - ETOR set/edit
 - Crew assign/un-assign
 - Verify
 - Restore
 - Cause code set/edit

- OMS Assessments**
 - View OMS assessments
 - Create/Edit OMS assessments
 - One shot/hot line tags

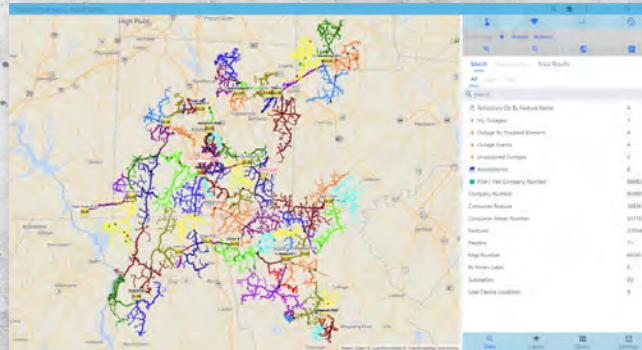
- AMI**
 - View meter on/off responses
 - Ping meters
 - Ping meters downline

- AVL**
 - See truck location and movement in real time on map from AVL vendor

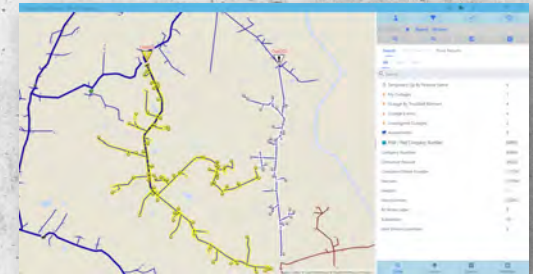
- Live Model**
 - View temporary operations
 - Create temporary operations
 - Live outage model tracing
 - Hold Cards

Examples:

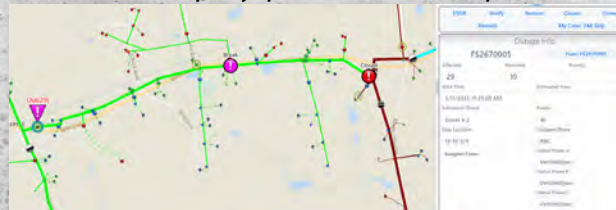
Zoom to Model Extents with Outages



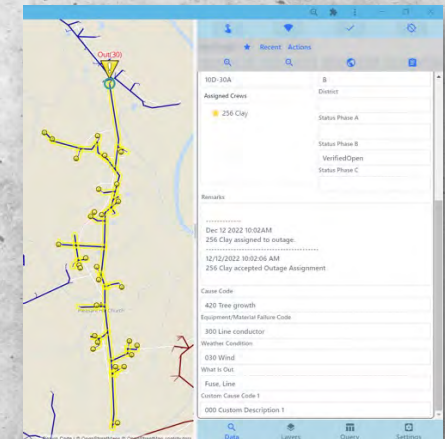
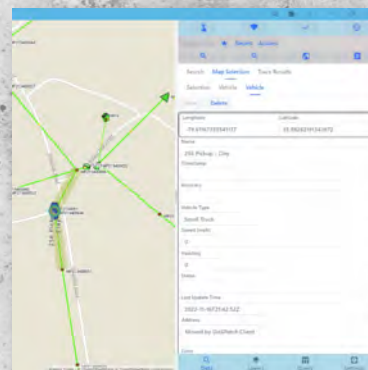
Outages on Map



Temporary Operations Shown on the Map



Truck Locations



Outages on Map

Add-ons to Base Platform



Electric Projects / Staking

- Electric Projects / Staking with Accounting Integration:** Design, plan, and document the placement of electrical infrastructure, such as poles, lines, and equipment, in the field. Streamline the process of creating detailed construction plans, integrating GPS data and system models to ensure accurate and efficient project execution. Staking with and accounting integration streamlines operations by automating data entry and workflows through seamless communication with other business systems like payroll, ERP, and CRM. This reduces manual tasks, improves accuracy, and enhances overall efficiency.
- Electric Projects / Staking without Accounting Integration:** Design, plan, and document the placement of electrical infrastructure, such as poles, lines, and equipment, in the field. Streamline the process of creating detailed construction plans, integrating GPS data and system models to ensure accurate and efficient project execution. No accounting integration is included with this option.
- Service Orders:** Create service order for all things utilities: installing meters, removing meters, etc. and all other utility services that are maintained by utility management.
- Easements:** Provides an efficient and convenient way for utility crews to access complete current right-of-way data associated with the location they plan to work on.

Examples:

Complete Project with Callouts



Picklist report

| Item | Description | Cost Each | Install | Status | Issued | Returned | Net |
|----------|----------------------------|-----------|---------|--------|--------|----------|-----|
| 993000 | ANCHORS EXPANDING | 21.12 | 1 | 0 | | | |
| 215000 | ATTACHMENTS TAP | 5.89 | 1 | 0 | | | |
| 6981300 | DRILL EYE BOLT 5/8" | 8.24 | 4 | 0 | | | |
| 688550 | MACHINE BOLT 5/8" | 1.27 | 8 | 0 | | | |
| 781510 | CUTOUT BRACKET 1.05 EQ 150 | 30.66 | 1 | 0 | | | |
| 972950 | 4/0 TAP LOC (SWEEFBARS) | 7.78 | 30 | 0 | | | |
| 1171000 | DUY BOND ANCHOR CLAMP | 8.82 | 1 | 0 | | | |
| 1172100 | CLAMPS DE H-SECT | 0.11 | 4 | 0 | | | |
| 1173000 | ALUMA SS CLAMPS | 9.19 | 1 | 0 | | | |
| 1174000 | DOPPEL CLAMP | 19.96 | 2 | 0 | | | |
| 1221201 | JR 12.5VRS 180 BARWIND | 6.51 | 1 | 0 | | | |
| 1810101 | 1/2 ACOR (RUVEN) | 0.29 | 115 | 0 | | | |
| 1771000 | GROUND ROD CLAMP-G | 1.44 | 1 | 0 | | | |
| 1141000 | HOTLINE CLAMP-DU | 10.95 | 2 | 0 | | | |
| 1810102 | CUTOUT OPEN 25 4V 100 AMP | 84.82 | 1 | 0 | | | |
| 8424211 | SECONDARY SPOCS INS | 1.16 | 2 | 0 | | | |
| 14199113 | BULL INSULATOR | 18.00 | 0 | 0 | | | |

Full System



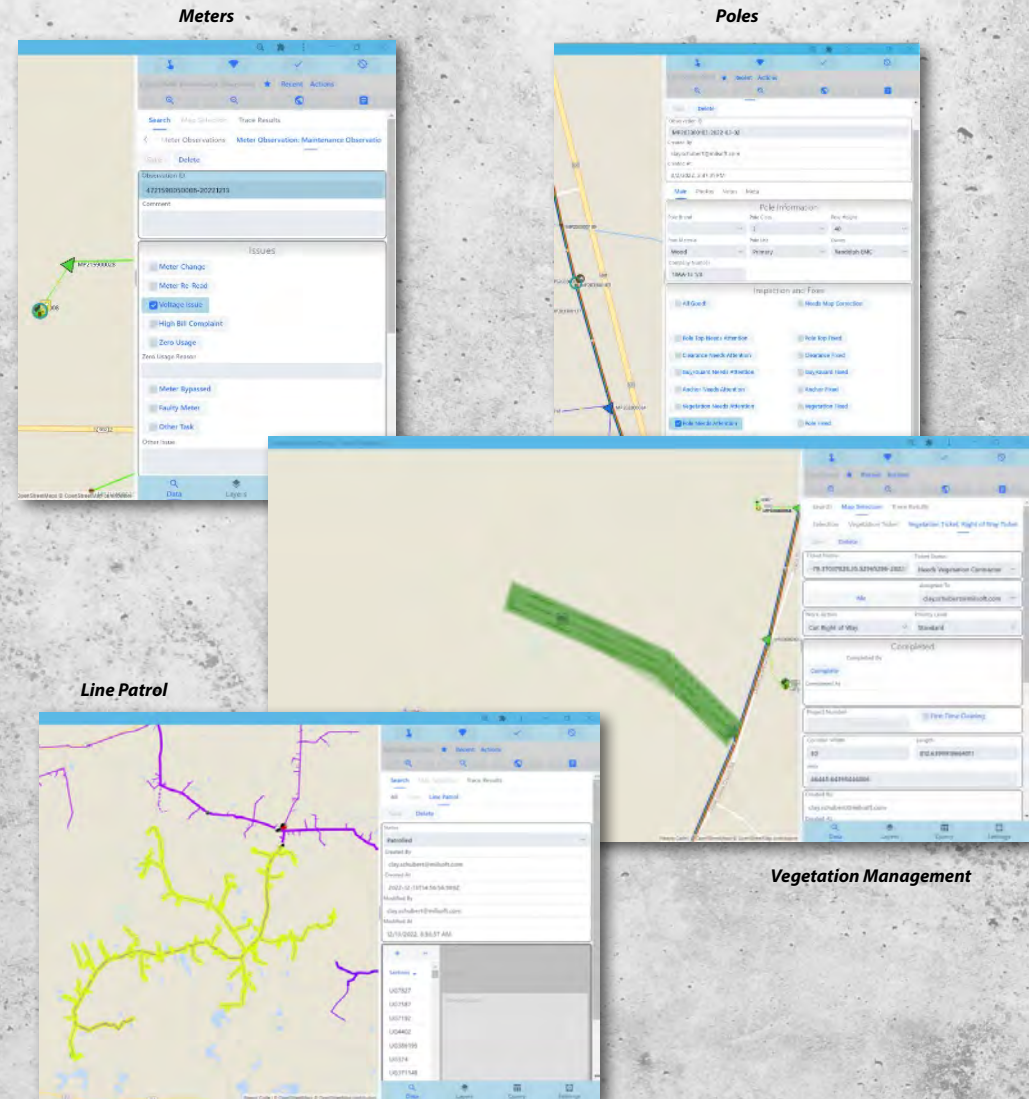
Add-ons to Base Platform



Tickets/Observations/ Inspection Books

- Pole:** Includes Tickets & Observations
- Meters:** Includes Tickets and Observations
- Storm Patrol:** Companion of Pole Tickets + Line Patrol (specifically organized by storm for FEMA, instead of keeping them in Pole Tickets).
- Line Patrol:** A drive-by tool to automatically mark/highlight on the map areas where the user has traveled on the system. Provides notation and tracking of areas that have not been driven by. Logs the drive-by of all users so utilities can easily see what part of the system has been driven by over a period of time.
- Underground:** Includes Tickets and Observations
- Substations and Major Equipment:** Includes Tickets & Inspection Books
- Sectionalizing Study Kit**
- Distributed Generation Meters:** Includes Tickets and Observations
- Vegetation Management (Included Tickets)**
- Custom Tickets:** Custom equipment tickets

Examples:



For more information or to schedule a demo:

Email us at: sales@milsoft.com

or

Call: 800.344.5647

